

Inter Entity Transactions

For Sage 300 ERP (Accpac)

Updated for v2014



Are you **struggling** to keep everything in balance?
Do you run **multiple entities**, including branches, divisions, departments, funds, projects, trusts or companies within one or across **Sage 300 ERP databases**?
Increase the accuracy of your financial data

What is Inter Entity Transactions?

Developed by Orchid Systems, Inter Entity Transactions facilitates doing business and transferring funds between entities. Entities can include branches, divisions, departments, funds, projects, trusts or multiple companies held within one or across Sage 300 ERP (Accpac) databases. Inter Entity Transactions increases the accuracy of your financial data, streamlines business processes and provides tight control over transactions spanning multiple entities.

The due to and due from transactions are automatically generated and complex routes can be followed when there are no direct inter entity account relationships between the transacting entities.

Detailed reports and processes ensure entities balance at all times, increasing the timeliness and accuracy of information whilst saving keystrokes! The Inter Entity Transactions module will ensure that each entity stays in balance and will work on all General Ledger transactions regardless of whether they originated from any subsidiary ledger, the General Ledger, a third party module or an external system which has created General Ledger batches.

The module is well suited to non-profit organizations with Fund Accounting requirements and any organization with loan accounts which should mirror each other as a result of inter department, inter branch, inter divisional or inter company processing requirements within one or across Sage 300 ERP Databases.

The Benefits

- Accuracy of financial data.
- Streamlines Business processes.
- Complex routes can be followed.
- Automatic due to and due from transactions.
- Keep each entity in balance.

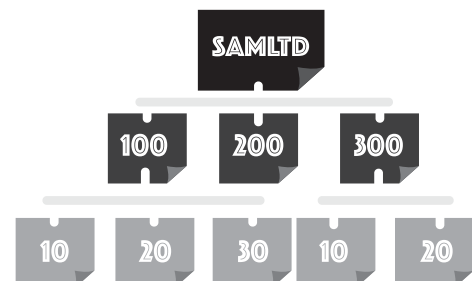
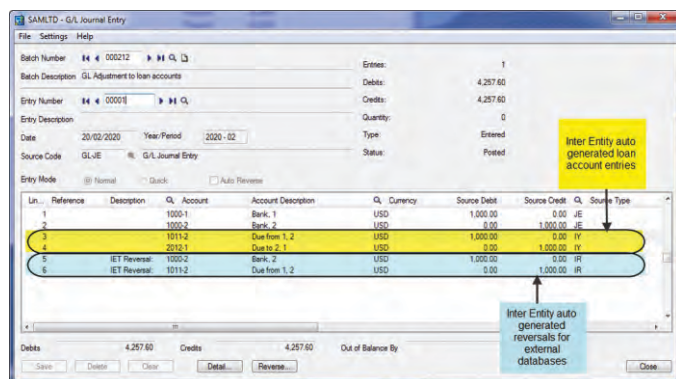
Cash Management*

Where organisations have multiple entities and bank accounts and need to transfer funds between them, Inter Entity Cash Management automates the process in Sage 300 ERP. No longer do you need to make all the duplicating transaction entries across companies.

All transactions are routed via predefined Inter Company loan accounts so they are kept in balance automatically.

- AR Receipts across companies
 - Allocate a receipt to a customer in one company and have the receipt go into a bank account in another company
 - Bank a receipt into a bank account in one company and allocate it against AR transactions which originated in other companies
 - Allocate a miscellaneous receipt to GL accounts in one or more companies whilst receipting the funds into a bank account in another company
 - Combined AR Trial balance across multiple companies
- AP Payments across companies
 - Process a payment against a vendor in one company and have the payment come out of a bank account in another company
 - Process an AP payment out of a bank account in one company and allocate it against AP transactions which originated in other companies
 - Allocate a miscellaneous payment to GL accounts in one or more companies whilst drawing the funds from a bank account in another company
 - Combined AR Trial balance across multiple companies
- Bank transfers between bank accounts across companies.

*Cash Management is included only in the multi database version of Inter Entity Transactions.





Streamline **business** processes while **saving** keystrokes and time
 Tighten **control** over transactions spanning **multiple** entities
 Use Inter Entity Transactions to **ensure** your entities are always **in balance**

Key Features

AUTOMATE LOAN ACCOUNT ENTRIES

- Works within one and/or across Sage 300 ERP databases.
- Due to / due from transactions generated automatically.
- Works on all General Ledger transactions, regardless of where they originated from.
- User definable routes, including complex routes across multiple entities.
- Balance transactions at the segment level (rather than just the Account level) for one or more segments.
- "Auto Reverse" entries destined for other companies.
- Supports transactions between entities with different functional currencies.
- Loan Account Balance enquiry and report showing matching loan accounts across multiple databases.
- Consolidated AR Aged Trial Balance across multiple databases.
- Consolidated AP Aged Trial Balance across multiple databases.
- Post transactions based on date rather than fiscal period to support entities with different Period and Year Ends.
- Optionally set GL Accounts and GL Transactional Optional fields to be auto created in target databases.
- Optionally set batches in target databases to autopost.
- Generate batches for Import into remote "offline" company databases.
- Supports standard Sage 300 ERP functionality such as GL Auto Allocation and GL Reversing Entries.

AUTO CREATE AP, AR AND/OR GL REALLOCATIONS

- Automatically trigger additional transactions (GL, AR and AP) to automate complex Inter Entity transactions.
- Use wild cards in the setup to make it easier.
- Account Substitution to reduce the need to replicate accounts in multiple entities.
- Configure AP and AR reallocations to accumulate, allowing for periodic on-charges.

INTEGRATION

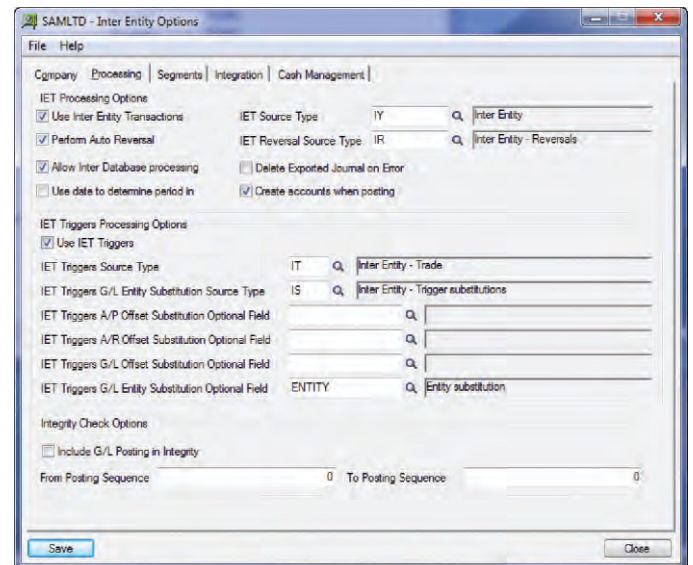
- Developed in the Sage 300 ERP SDK providing Sage 300 ERP look and feel.
- Standard Sage 300 ERP security, customization capabilities, import/export, data integrity checking and more!

Minimum Requirements

Inter Entity Transactions 2014 requires Sage 300 ERP 2014 System Manager and General Ledger.

Further details from your Sage Software Solution Provider.

Copyright © 2014 Orchid Systems. All rights reserved.
 All trademarks are registered trademarks or trademarks of their respective companies.



"They (prospective Sage 300 ERP Users) are also looking at a competing product, but their add on to do inter segment balancing is US \$4,500 plus two days of training from the developer.

I was able to setup a compelling demo in a couple of hours using the Orchid add on without any training from the developer ...go figure! I thought the documentation was very good with nice examples...."

Sage 300 ERP Solution Provider quote...

